

FAST Antigen tests

Institut Virion uses Tests produced by **Fujirebio®**, the same tests that the Japan use in their national testing program - **ESPLINE® SARS-CoV-2**.

>80 %

Sensitivity is the WHO requirement for usage of fast antigen test

100 %

Specificity is what our test will deliver!



The company with long tradition and credibility on the diagnostic market.

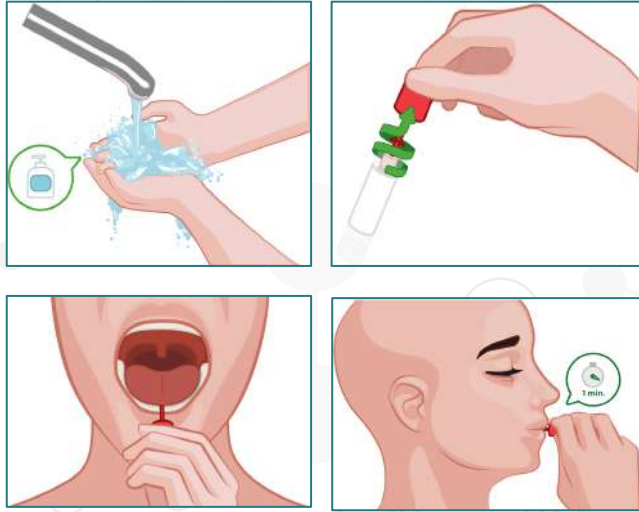
EASY TO USE ON THE TESTING SIDE

Antigen testing can be done on any testing site, and the results can be transferred to our laboratory as the photo-documentation.

THE ONLY CLICK AND START TEST ON THE MARKET

All the tests can be started at the same time by clicking the button on the testing caseate. This ensures correct timing for a photo-documenting big group of tests just with one photo. Photo documentation will be validated in the laboratory, and results will be entered.





NEW PCR SOLUTIONS

COMING SOON AFTER THE VALIDATION !!!

Institut Virion validates new sampling systems from COPAN, so-called "SPUNCH LOLLYPOPS".

our goals are:

>99% Sensitivity

100% Specificity

if compared with traditional sampling methods (swabs)



1. Wash your hands
2. Open the tube
3. Place the sponge under the tongue for approx. 1 min
4. Put the sponge back into the tube
5. Send the sample to the laboratory

